



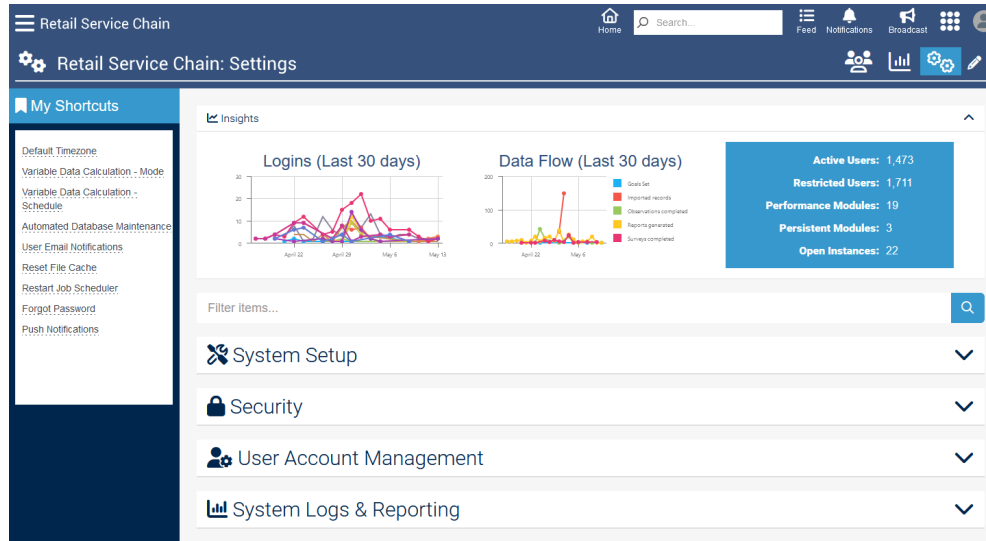
# What's New in GideonSoft 2024 Release 1

We're happy to introduce the latest GideonSoft release. Along with performance enhancements, stability improvements and bug fixes, we have added some exciting new designs and features to take care of those who take care of GideonSoft!

## A Whole New Org Settings Look and Feel

The new interface includes ...

- Completely overhauled Org settings UI, making it easy to find what you're looking for.
- New high-level insights data to quickly gauge activity org-wide.
- Shortcuts! So you can get to and knock out the tasks you need to more quickly.
- New Organization-level QA reporting.



*Organize your Organization!*

# Pumped Up Stats (No Lies!)

**Change**

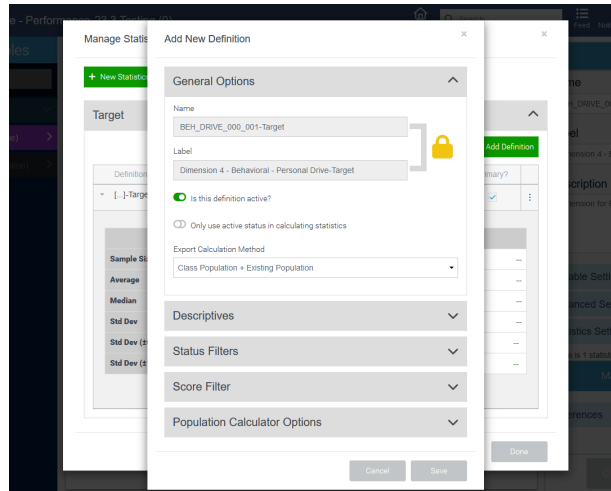
**More Capability and Precision** ... We completely reworked the code for more precise statistics management, to better handle how the data is stored and managed, and to provide more functionality!

**Design**

**An Easier, Streamlined Interface** ... We also completely reworked the UI for setting up and managing stat definitions. Statistics can be complicated enough!

**Design**

**Automatic Recommendations** ... If data exists, but no definitions are in place, GideonSoft can make recommendations to help you get started.



*The 100% New Statistics management screen is well above average!*

## Report Updates to Report!

---

**Change**

**More Precise Report Date Parameters** ... We've added the ability to include hours with a date parameter.

**Feature**

**Digital Signature Enhancements** ... Digital Signatures can now be added to custom group reports, and report designers can now customize the PDF file name.

**Design**

**A New and Flexible Report Page UI** ... The report page now matches the surveys page, with a split screen, smaller rows, and the ability to cluster reports together.

---

## More Refined People Organization

---

**Change**

**More Details Available for Instance Level People** ... This update adds the option to display Org fields via the Column Chooser.

**Change**

**A More Flexible Process to Add New People** ... Now more admin roles can see and approve people to review in Persistent Modules and Instances.

**Feature**

**Automatic Expressions for People to Review** ... We've added the ability to automatically apply default expressions for various fields when adding people.

**Feature**

**Prevent Duplicate Email Address Usage** ... Flag potential duplicate email addresses when people join via QR Code.

**Design**

**Improved Profile Visualization Design** ... This settings page has been redesigned to be more streamlined, and to be consistent with other design pages.

---

# Powerful, and Persistent (Module)

Change

**(New!) Flexible Display in Custom Text Fields** ... We've added the ability to display a check box or toggle in a Yes/No picklist.

Change

**Bring Status Notes With** ... When a rule changes a person's Status in a Performance Module, the status notes are brought in too.

Change

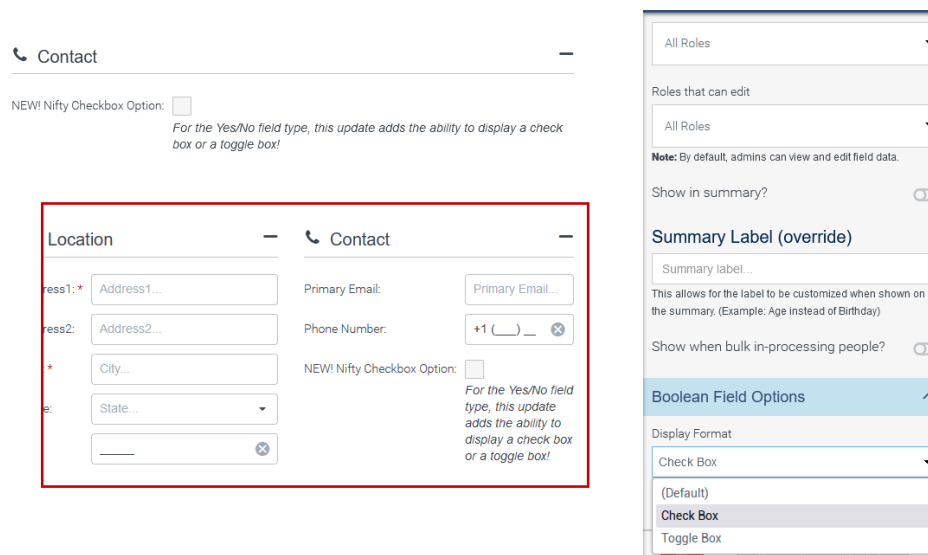
**Display Status Notes** ... Since we're bringing in status notes, why not display them on the people grid?

Feature

**Custom Fields When Moving People** ... You can now make a custom field available when moving people to a Performance Module.

Design

**More Refined Control of Visibility** ... You now can assign one or more roles to Units and to Categories.



*The New and Nifty Yes/No field type!*

## Other Miscellaneous Goodness

---

**Change**

**New GideonSoft Installer** ... Allows for a custom install location and more smoothly handles an upgrade if GideonSoft is already installed.

**Change**

**Multi-Language Support** ... This update lays the groundwork to support other languages in addition to English.

**Feature**

**Built in QA reporting** ... In addition to 2 new Organization-level reports, there are 1 new and 3 updated Instance-level reports.

**Feature**

**Status Now Included in Auto-Instance Settings** ... You can now transfer any selected status to the new Instance.

**Design**

**Survey Display Flexibility on Mobile Devices** ... Show the web version of a survey on mobile devices and include multiple questions on a single page.

---